



WHERE IT STARTS



QUARTERLY REPORT
Q4 2025

WINSTONSALEM.COM

REAL ESTATE INVESTING *SIMPLIFIED*

L

T

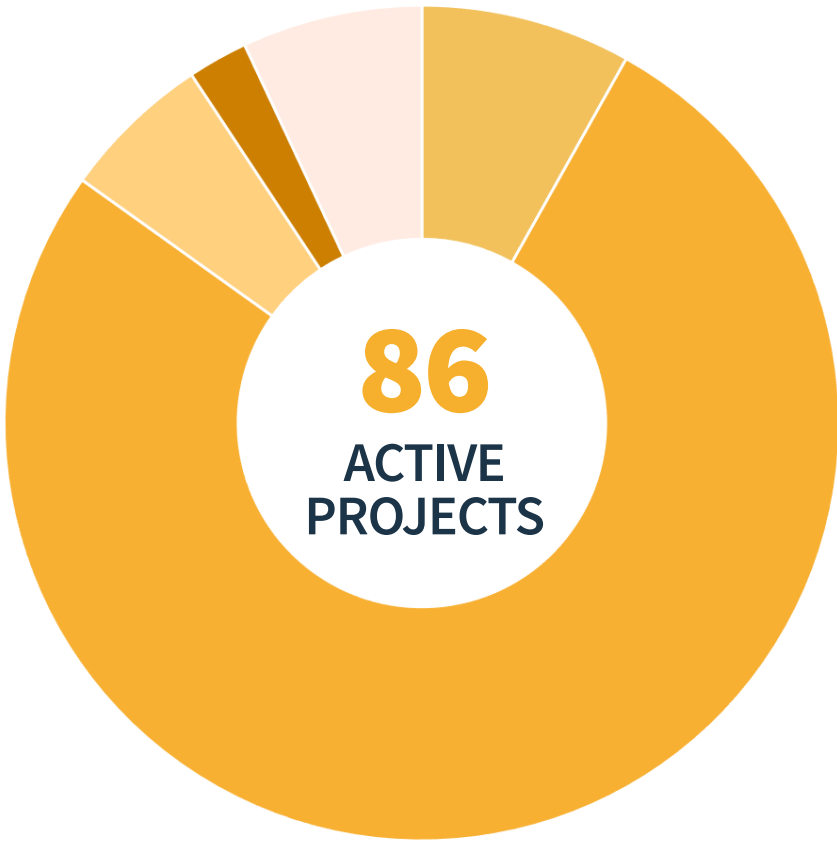
BUILT FOR INVESTORS WHO WANT ACCESS,
WITHOUT ANOTHER FULL-TIME JOB.

WANT TO LEARN MORE?
REQUEST AN INTRO CALL



Disclaimer: This investment opportunity is for verified accredited investors only under Regulation D, Rule 506(c).

ACTIVE PROJECTS

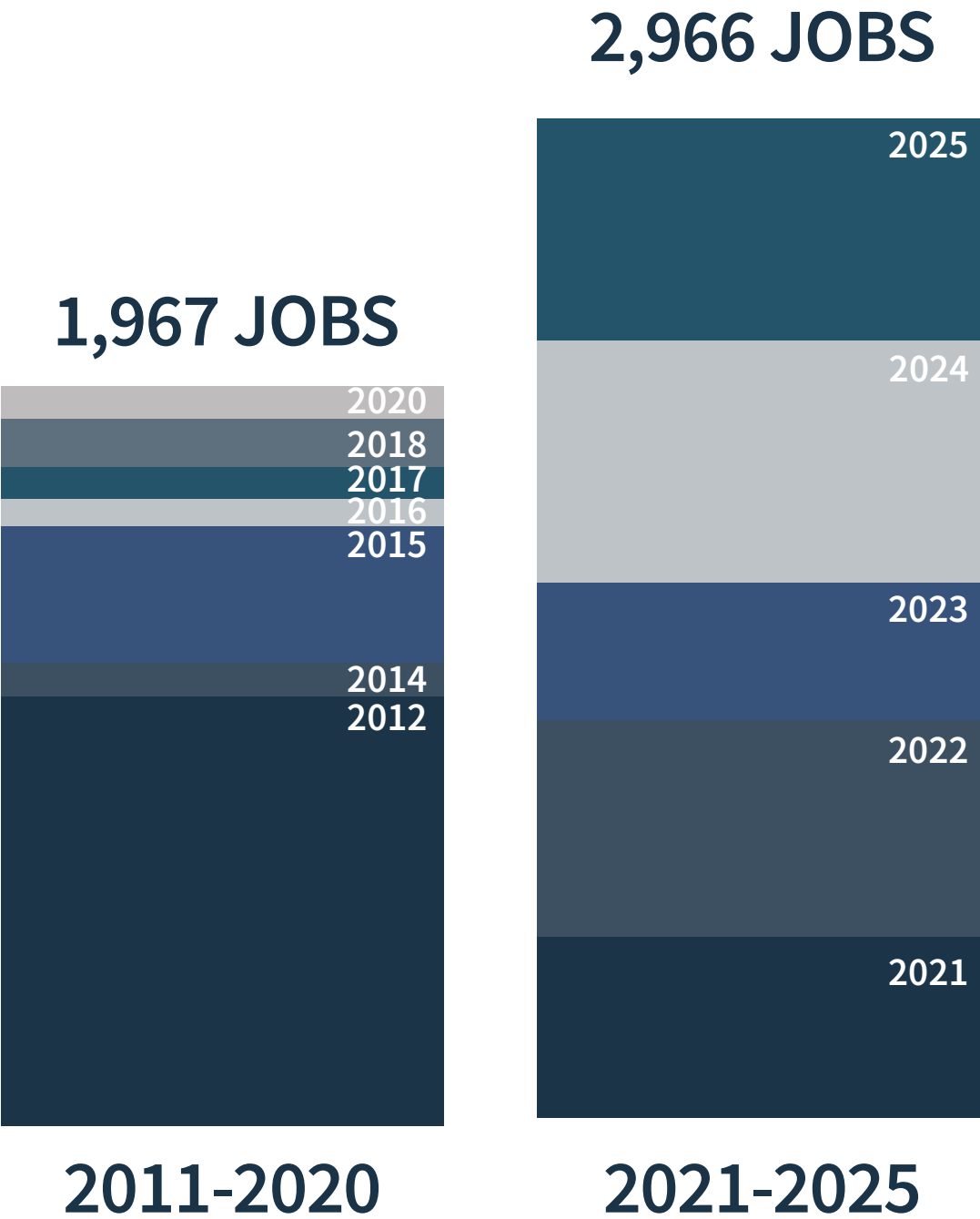


- ADVANCED MFG | 66
- LIFE SCIENCES | 7
- FOOD & BEV MFG | 5
- AVIATION | 2
- OTHER | 6

ANNUAL GROWTH



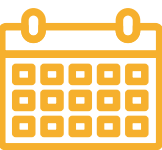
15-YEAR JOB CREATION



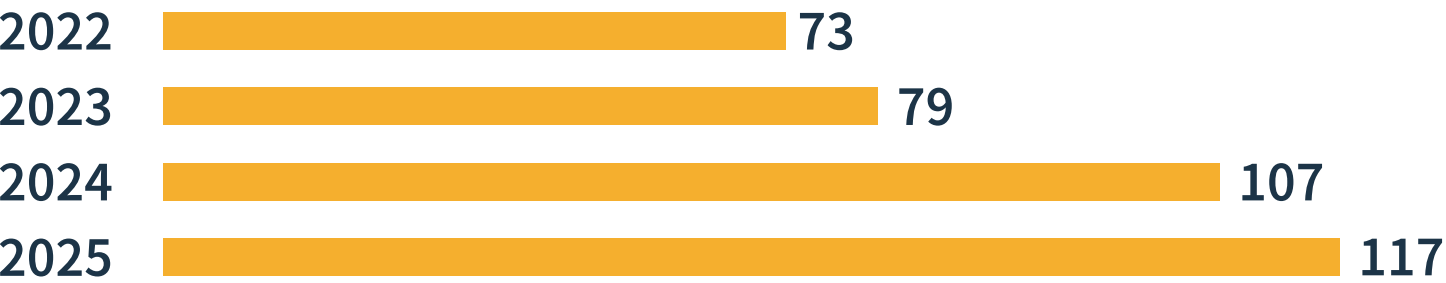
MEMBER DEVELOPMENT & ENGAGEMENT

2025 YEAR IN REVIEW

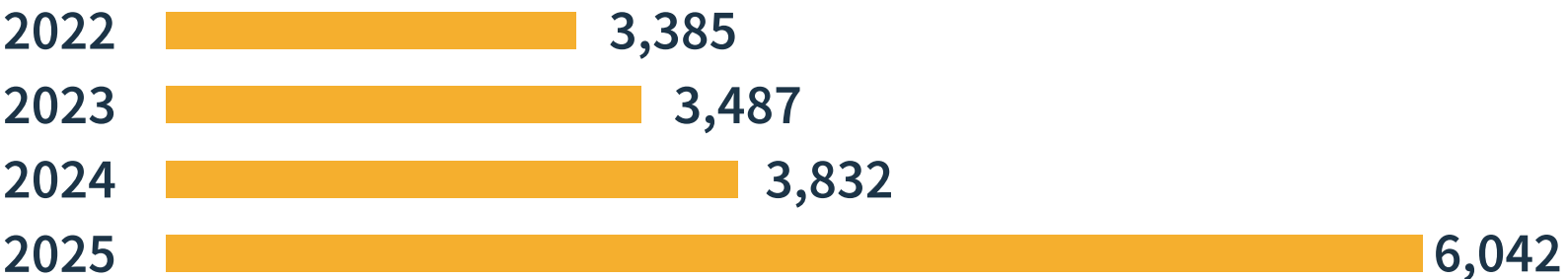
WHERE GROWTH STARTS



ANNUAL EVENTS



MEMBER ENGAGEMENT



198 NEW MEMBERS



47 RIBBON CUTTINGS



384k IMPRESSIONS 6,455 FOLLOWERS



397k IMPRESSIONS 8,117 FOLLOWERS



159k IMPRESSIONS 9,748 FOLLOWERS

Q4 NEW MEMBERS

AERO8	GUARDIAN SHIELD	RAYMOND SUPPLY COMPANY
ARCHWELL HEALTH	HOME INSTEAD	RDM BENEFITS, INC.
BOLTON & MENK, INC.	HONKY TONK SMOKEHOUSE	RENEWABLE ENERGY DESIGN GROUP
BOWEN TOWN & COUNTRY FURNITURE COMPANY	JOYFUL SOUL TREASURES	ROBERT L EDWARDS DDS, PLLC
BRYANT’S CONTRACTING, LLC	KEN GARNER MANUFACTURING- RHO INC	SIGMA INDUSTRY
CASSIA CAPITAL PARTNERS	LINDEN CREEK	SOA SALONS
CENTRAL STEEL BUILDINGS	LS3P ASSOCIATIONS LTD	SPARQ
CONSCIOUS STRONG LLC	MAC AND CHEESE PRODUCTIONS	TASTE BUDS KITCHEN
DUTCH LIGHT	MIGHTY DOG ROOFING	THE GODDARD SCHOOL OF WINSTON-SALEM
ELEMANCE LLC	MORAVIAN MINISTRIES FOUNDATION IN AMERICA	THE HISTORIC BROOKSTOWN INN
ELITE MOVEMENT PHYSICAL THERAPY	MOUNTAIN PARK SPRING WATER	TRIJECTORY HOLDINGS LLC
EPIPHANY ELC	MPATH HEALTH	US ENHANCED PERSONNEL, INC.
EXCALIBUR DIRECT MARKETING	OLMEDO HOMES SERVICES	VINTAGE SOFA BAR
FAIR SHARE FARM LLC	OSPREY IMAGERY LLC	WAGNER APPLIANCE
FASTEST LABS OF WINSTON-SALEM	PARTY ANGEL DÉCOR	WATER PURIFICATION CONSULTANTS INC
FRANK MYERS	PASCHAL PROMOTIONS INC	WILDER RESTORATION
GRAIN APART	PRICE 4 CHARTER BUSES & LIMOS WINSTON-SALEM	YOUR WELLNESS CENTER DBA SAYN TESTING SOLUTIONS
GATEWOOD, BAGLEY & HUFFMAN, CPAS, PC	PULTE GROUP	



LOOKING FOR MORE LOCAL BUSINESSES?

Click here to browse our member directory and connect with businesses in Winston-Salem!

RIBBON CUTTINGS

Q4

WHERE BUSINESS STARTS

HOME AGENCY
WHATABURGER
FLOOR & DECOR
QXO
FRANK MYERS AUTO MAXX
DURO-LAST
STADLER AMERICA
THE LITTLE GYM
SUPPORT SYSTEMS OF FORSYTH COUNTY
ETHAN ALLEN
NO EXCUSES BE GREAT PRODUCTIONS
THE FLAWLESSKIN COMPANY
CARTER BANK
PIEDMONT ADVANTAGE CREDIT UNION
THE CREST



PIEDMONT ADVANTAGE CREDIT UNION



WHATABURGER



ETHAN ALLEN



NEW INSURANCE OPTION FOR MEMBERS

Carolina HealthWorks is now available for members of Greater Winston-Salem Inc. This health plan option brings together North Carolina small businesses to access healthcare through a multiple-employer welfare arrangement (MEWA) model. A MEWA offers an alternative to small businesses that allows them to pool their resources and provide access to the rate advantages and benefits typically only enjoyed by larger groups.

Carolina HealthWorks is available to North Carolina small businesses that have 2 to 50 employees and are members of either the NC Chamber or a participating local chamber. Carolina HealthWorks has chosen Blue Cross NC to be the administrator for this health plan, offering access to Blue Cross NC's broad network. Small business owners have opportunities to enroll in the plan throughout the year.



TWO COMPANIES RECEIVE LIFE SCIENCE GRANTS

Two local life science companies are growing in Winston-Salem, supported by grants through the BioNest Fund. GWSI launched the BioNest fund in September in partnership with the Whitaker Park Development Authority to incentivize growth within the local life science ecosystem, as these companies don't always reach thresholds for traditional economic development incentives.

Ricoh 3D for Healthcare will use the BioNest grant to expand into an adjacent lab facility to complement its current space in the Innovation Studio of One Technology Place, accommodating both internal product development and partner contract manufacturing.

Plakous Therapeutics will use the BioNest funds to purchase capital equipment necessary to grow its research and development efforts and scale production capabilities for GMP product needed for safety studies prior to a clinical trial.

ANNUAL MEETING



It was an evening of celebration, recognition, and looking forward at our Annual Meeting!

Held on November 4th, this year's signature event featured a keynote from Spencer Baird, President and CEO of Inmar Intelligence.

We also celebrated five years of impact through the Minority Business Enterprise grant program which has distributed over \$1 million to local businesses.

Congratulations to this year's award recipients for the Small Business Awards, Truliant Collaboration of the Year Award, and the Dr. Anthony Atala Innovator of the Year Award presented by Allegacy Federal Credit Union!

Supporting Sponsors:

Duke Energy

Kilpatrick Townsend

Truliant Federal Credit Union

Innovator of the Year Sponsor:

Allegacy Federal Credit Union

Reception Sponsor:

Mercedes-Benz of Winston-Salem

Gold Sponsors:

Carolina Core

Cook Medical

Inmar Intelligence

Winston-Salem Dash

Winston-Salem State University

Floral Sponsor:

Sophisticated Florals

Photography:

Red Cardinal Studio



SMALL BUSINESS OF THE YEAR

MOZELLE'S AND
BETTY ON BURKE



ALLEGACY INNOVATOR OF
THE YEAR AWARD

NOVEX INNOVATIONS



TRULIANT COLLABORATION OF
THE YEAR AWARD

NSF ENGINE

LEADERSHIP AWARDS



Join us in celebrating the 25 outstanding young professionals honored at this year's Winston Under 40 Leadership Awards! These individuals have demonstrated exceptional leadership, career success, and impactful community contributions across various industries in Winston-Salem.

SUZIE BLACKMAN	ETHAN KING
FLORIAN BRAUN	DR. DAVID KLINE
ZACH BURICK	JAI'LYN LOVER
DR. OWEN BUSSEY	MELISSA MCKINNEY
COLE CLARK	STEPHANIE MILES
JAZMIN CLARK	LIS MULCAHY
KELLINA DJANFA WANTEU	REV. KENNETH PETTIGREW
KELLY GARVIN	TANNER POINDEXTER
JOHN-LEWIS GODFREY	KENNETH REID
KYLE HANEY	BANKS SHEPHERD
DR. CHRISTOPHER HINTON	ANDY SZABAT
MEGAN HOYT	DAVID TYSON
TIFFANY JONES	



SPECIAL THANKS:

Presenting Sponsor: Truliant Federal Credit Union | Reception Sponsor: Debbie's Staffing | Photos: MJS Live Productions | Venue: Legacy Stables & Events | Awards: Viator Design & Construction



**WORLD^{OF}
WORK**

PRESENTED BY FORSYTH COUNTY

2,500

STUDENTS

160

JOB SEEKERS

80

EMPLOYERS





**Forsyth
Works**

12K

WEBSITE
VISITORS

31K

SOCIAL
IMPRESSIONS

200+

PROGRAM
PARTICIPANTS

FEATURED PROPERTIES

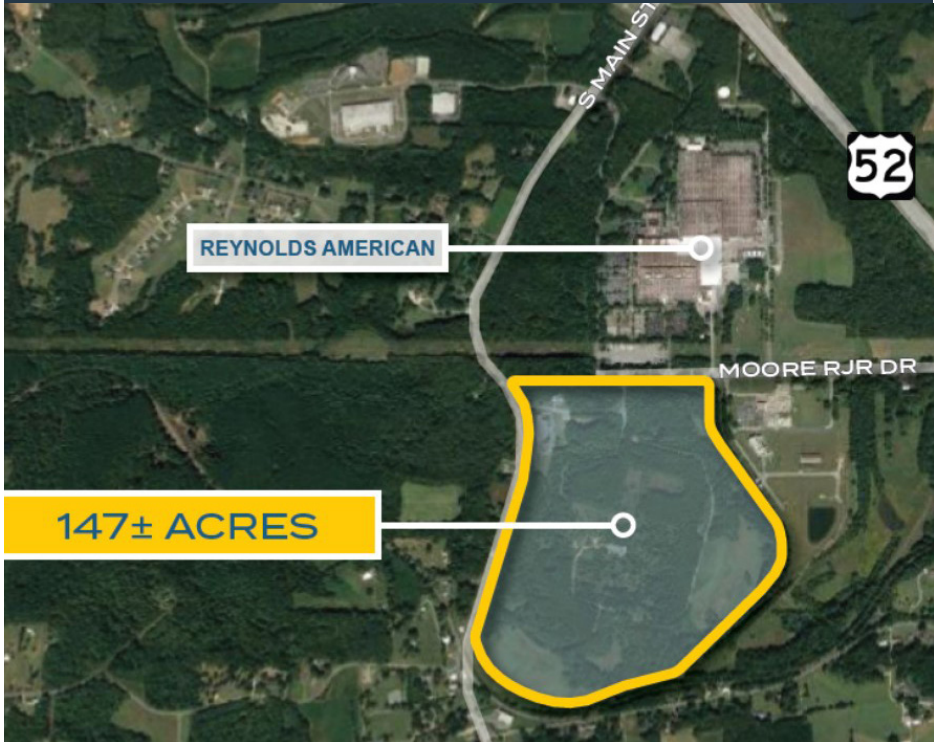
WHERE GROWTH STARTS

1190 OLD BELTWAY



- ± 77,000 SF
- INDUSTRIAL FLEX SPACE IN RURAL HALL
- AVAILABLE FOR LEASE
- MULTI-TENANT CAPABILITY
- DRIVE-IN DOORS

NORTH FORSYTH INDUSTRIAL PARK



- ± 147 ACRES
- ZONED GENERAL INDUSTRIAL
- PHASE I ENVIRONMENTAL, WETLANDS DELINATION, GEOTECHNICAL, AND ENDANGERED SPECIES REPORTS AVAILABLE UPON REQUEST

821 EAST 25TH STREET



- 84,000 SF OF VERSATILE INDUSTRIAL SPACE
- MODERN AMENITIES
- AMPLE PARKING
- SUITABLE FOR MANUFACTURING AND DISTRIBUTION
- ACCESSIBLE TO US 52

2025 RETAIL INSIGHTS

185

PROPERTIES SOLD
OVER THE PAST
YEAR

\$195M

SALES
VOLUME

\$775K

MEDIAN
SALE
PRICE

The Winston-Salem retail market remained tight throughout 2025, with vacancy ending the year near historic lows and standing at 2.9%. This represents only a modest increase over the past year, driven by 140,000 square feet of new deliveries that were largely offset by continued tenant demand. Vacancy levels remain below both the five-year (3.1%) and ten-year (3.4%) averages, underscoring sustained strength across most retail formats. Overall availability totaled approximately 1.3 million square feet, or 3.2% of inventory.

Investment activity in Winston-Salem retail properties was steady in 2025, with 185 properties trading and total sales volume reaching \$195 million, in line with the market’s five-year average. Pricing remains attractive relative to national benchmarks, averaging \$162 per square foot compared to \$246 per square foot nationally.



DELIVERED
IN 2025

144K SF

TOTAL
INVENTORY

41M SF

VACANCY
RATE

2.9%

PRESIDENT'S LETTER



MARK OWENS

PRESIDENT & CEO

EXCEEDING OUR BEST EXPECTATIONS

When we were honored as National Chamber of the Year, I felt an immense sense of pride in our team and our community. The recognition affirmed that we were setting a powerful example of what a Chamber can achieve through impact, leadership, and collaboration. While it was important to pause and celebrate that milestone, we also knew the work didn't stop there. As the torch passed this July (congratulations to the Greater Memphis Chamber!), we stayed focused on what comes next.

Having rounded out our "Chamber of the Year" year, I can say our commitment to delivering strong and impactful change in our community has only continued to grow.

2025 brought us growth in our project pipeline that created jobs and investment. We saw increased membership, providing opportunities for more business professionals to network and get involved, and greater engagement of our existing members and investors.

We won't be eligible for the Chamber of the Year award again for several years, but in my opinion, we continue to exemplify the best of the best.

A handwritten signature of Mark E. Owens in black ink.

Welcome to **brighter banking.**

Proud to be the largest financial institution
headquartered in the Triad.



— 2025 —

REPORT TO THE COMMUNITY

Your community, your college, your report.
Take a look inside Forsyth Tech's impact and
explore the 2024–2025 Report to the Community.

View Online
short.forsythtech.edu/Report25



Best physicians.
Amazing nurses.
Remarkable care.



STRONG ROOTS, **BOLD** FUTURE

Serving Winston-Salem/Triad businesses for over
a century, Womble Bond Dickinson combines deep
local roots with forward-thinking solutions for today's
dynamic world.

LEARN MORE





FORSYTHWORKSNC.COM

Workforce resources for job
seekers and employers.



LEGISLATIVE BREAKFAST

FEBRUARY 6 | 7:30AM

FORSYTH TECH ROBERT L. STRICKLAND CENTER

Coming Soon

An innovative
transformation
with reimagined
meeting space.



PRINCIPAL FOR A DAY





OUR INVESTORS

ATRIUM HEALTH WAKE FOREST BAPTIST

NOVANT HEALTH

REYNOLDS AMERICAN INC.

TRUIST

WELLS FARGO

CITY OF WINSTON-SALEM

COOK MEDICAL

FLOW AUTOMOTIVE

FORSYTH COUNTY

FORSYTH TECH

FRONT STREET CAPITAL

HANESBRANDS INC.

KELLY OFFICE SOLUTIONS

MERCEDES-BENZ OF WINSTON-SALEM

QUALITY OIL

TRULIANT FEDERAL CREDIT UNION

TWIN CITY DEVELOPMENT FOUNDATION

WINSTON-SALEM/FORSYTH COUNTY SCHOOLS

WOMBLE BOND DICKINSON (US) LLP

REPORT SPONSOR

Linville | Team Partners
COMMERCIAL REAL ESTATE

PROUDLY LOCATED IN THE

NC CAROLINA
CORE

